



If you are updating your JumpAgent GUI without prompting from Healthjump, please notify us by sending an email to [support@healthjump.com](mailto:support@healthjump.com). If we are aware of an update, we can check that there is still a clear connection and that all the queries run successfully, to avoid any unexpected issues. Thank you, The Healthjump Team.

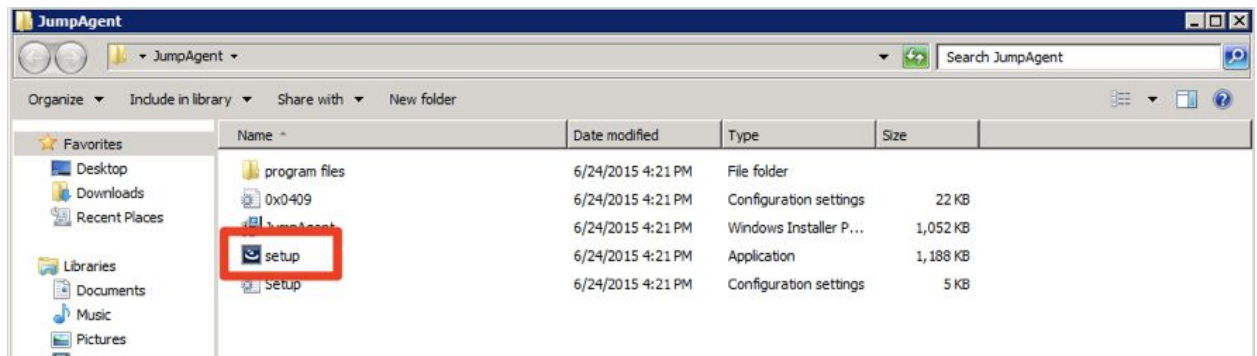
## JumpAgent Re-Installation and Configuration Guide:

Jumpagent is the database query engine that will open your division to clinical and financial analytics.

Installing and configuring the Jumpagent should be done by a technical resource who has access to the EHR/PM system database usernames and passwords. For support, please contact your Healthjump representative.

### Installation:

1. Download the JumpAgent from the link below onto a server machine that will ideally always have a connection to the EHR production database. Healthjump recommends installing JumpAgent on the database server.
  - a. <http://www.healthjump.com/hubfs/Downloads/JumpAgent.zip>
2. Drag the folder titled "JumpAgent" onto the desktop. Double click it and the double click "setup."



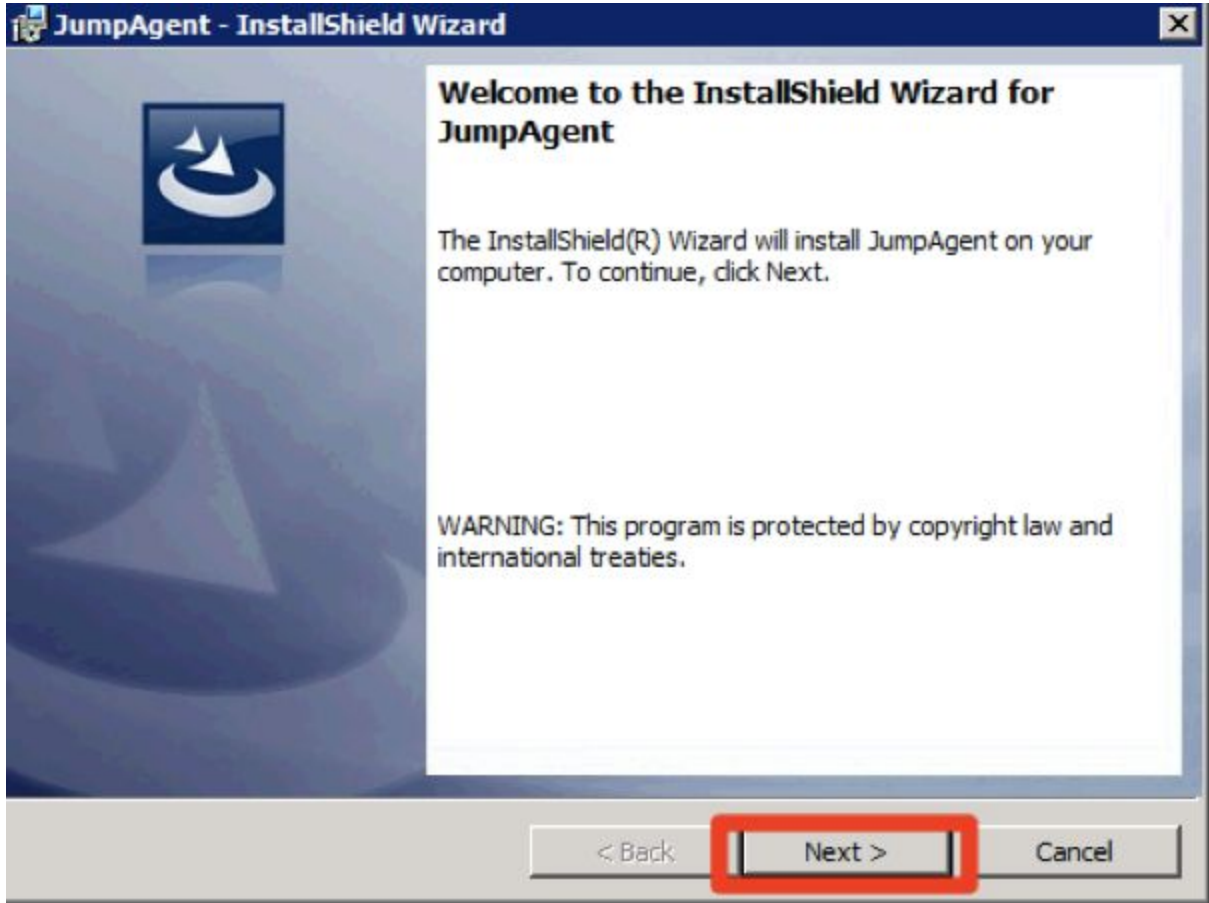
If this document has been download, please go to <https://support.healthjump.com/> for most up-to-date information.

3. Select "Run" on the open file security warning screen to run the installer application.



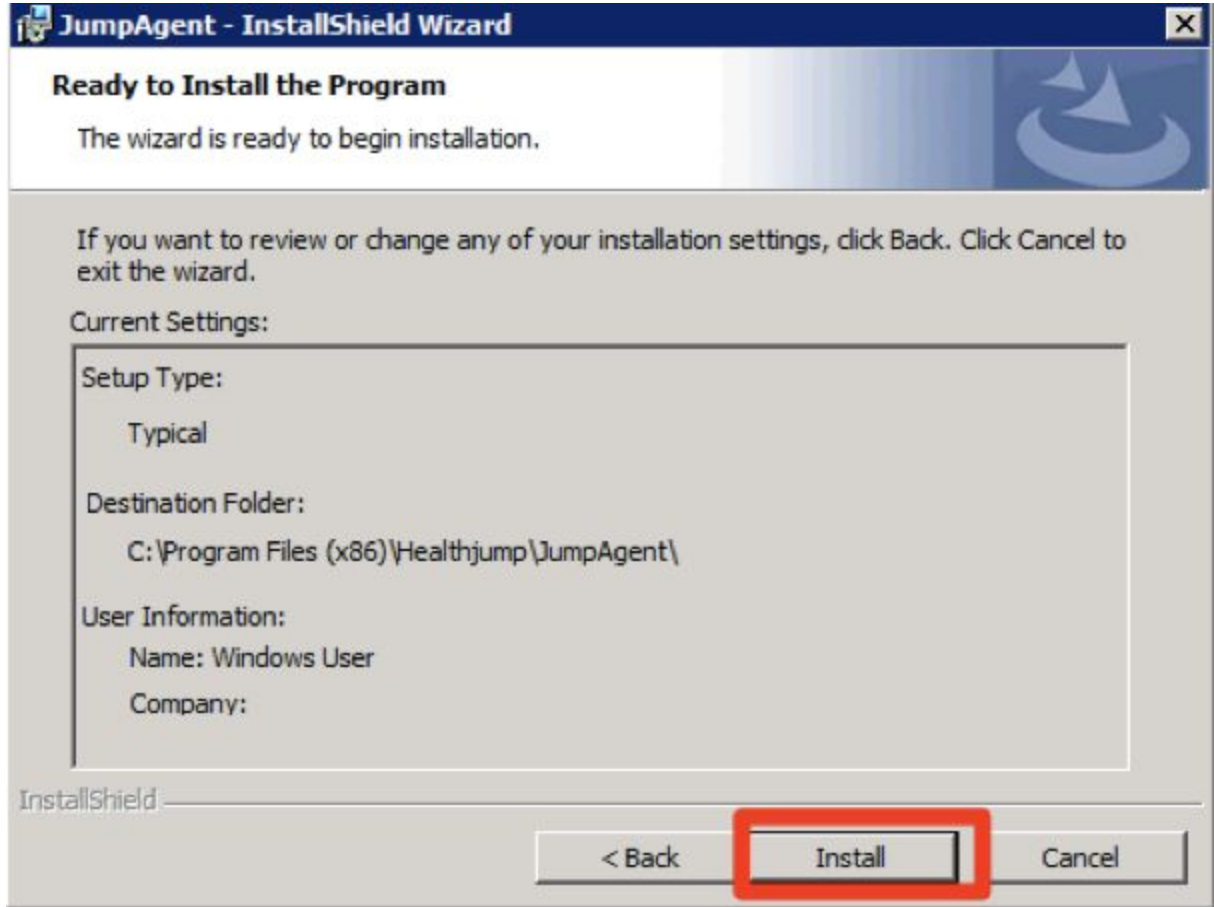
If this document has been download, please go to <https://support.healthjump.com/> for most up-to-date information.

4. After the install wizard launches, select "Next."



If this document has been download, please go to <https://support.healthjump.com/> for most up-to-date information.

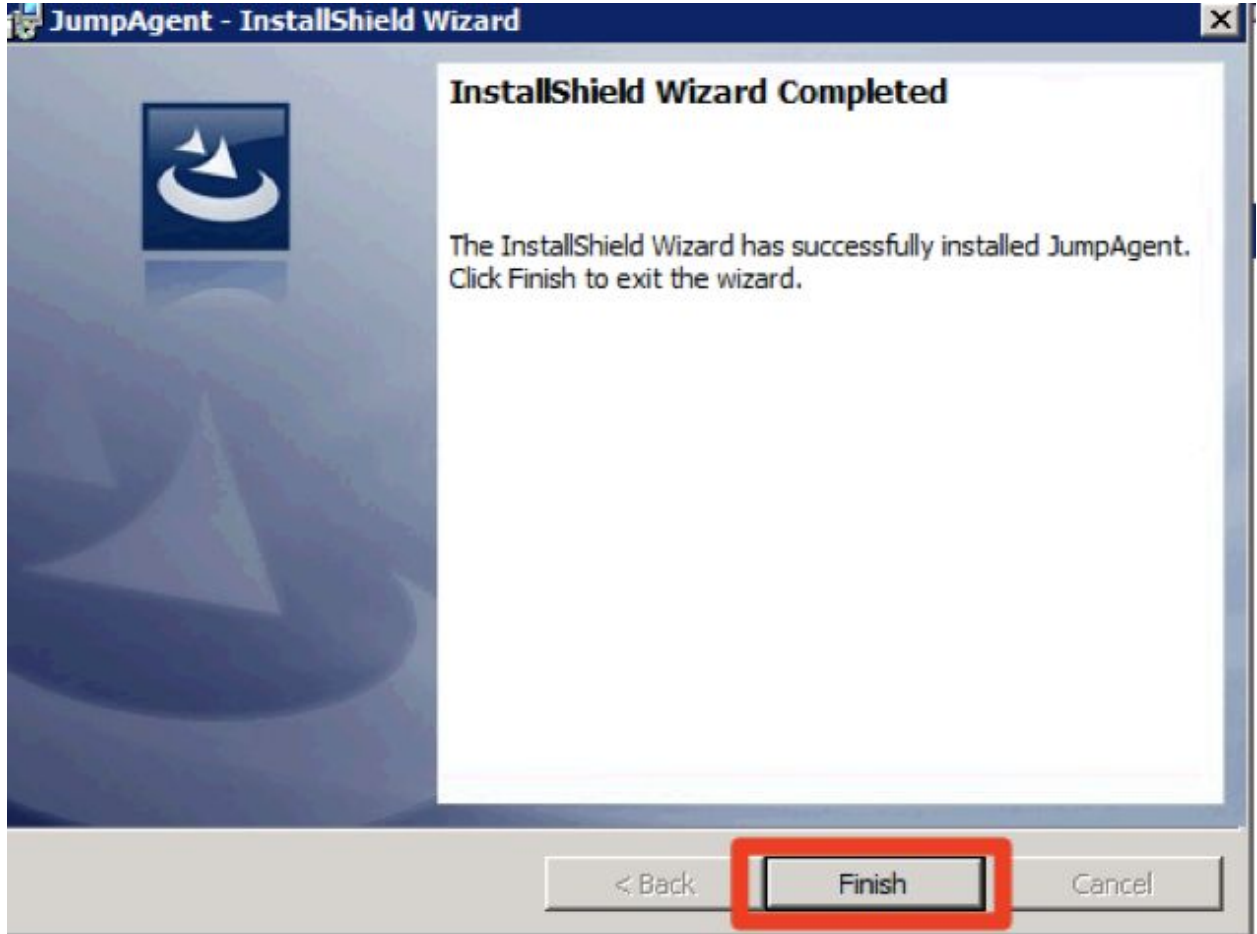
5. Begin installation by clicking "Install."



- a. Note the destination folder so that you can easily find the GUI for configuration.

If this document has been download, please go to <https://support.healthjump.com/> for most up-to-date information.

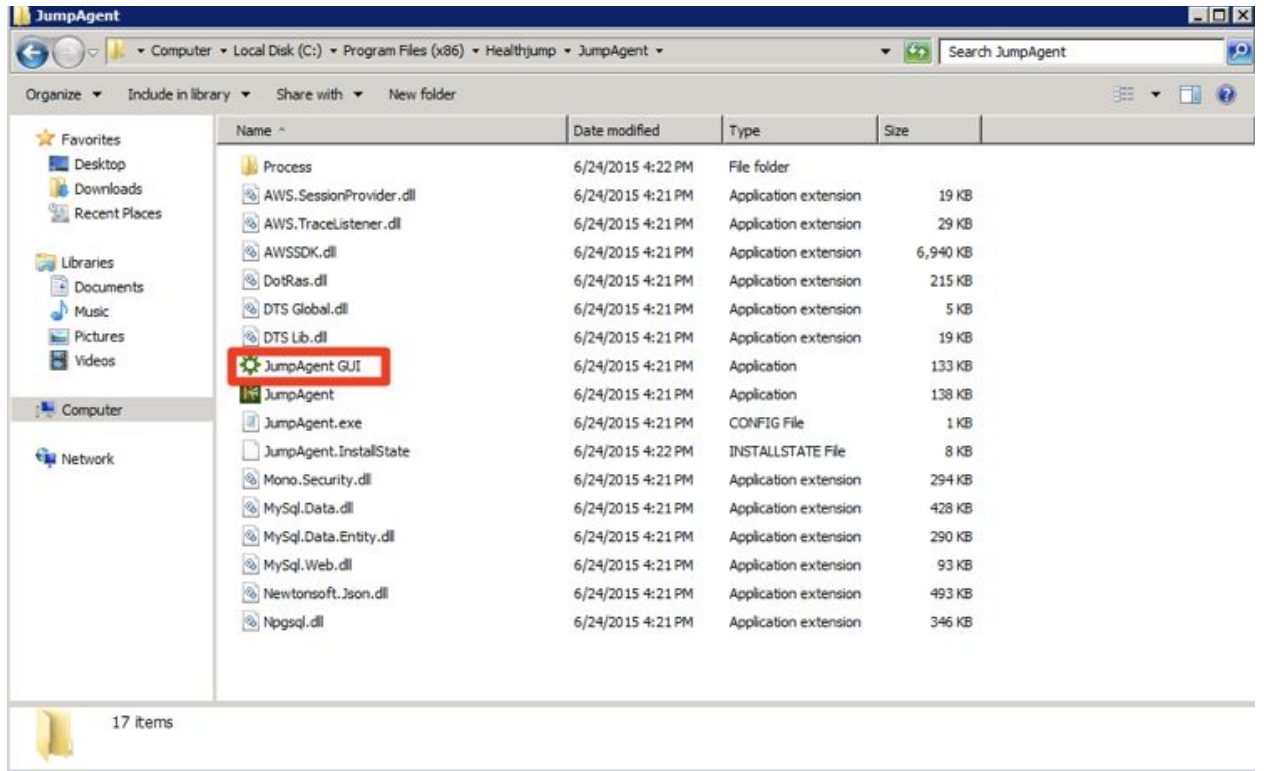
6. After the installation wizard has completed its functions, click "Finish."



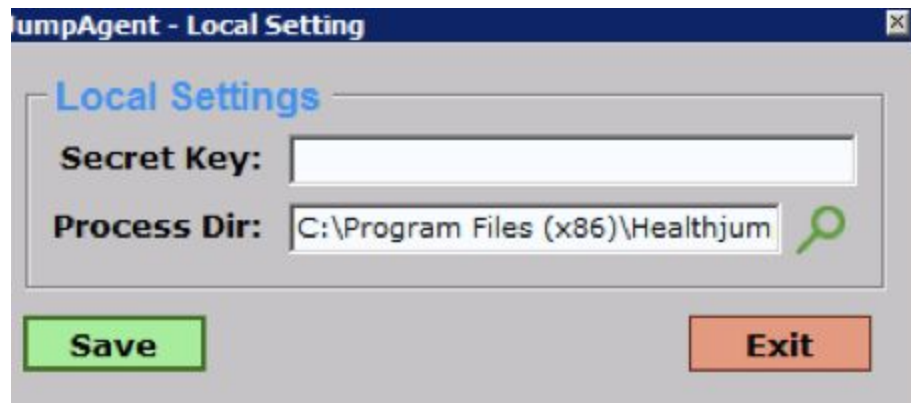
If this document has been download, please go to <https://support.healthjump.com/> for most up-to-date information.

## Configuration:

1. Navigate to the JumpAgent GUI by the file p4ath that was established during installation and double click on the application.



2. Enter the Local Settings.
  - a. The secret key is obtained from your Healthjump representative.



If this document has been download, please go to <https://support.healthjump.com/> for most up-to-date information.

3. Enter your EMR name and version, as well as your database information.

The screenshot shows the JumpAgent configuration window. It features a title bar with the text "JumpAgent" and a close button. The main area is organized into several sections:

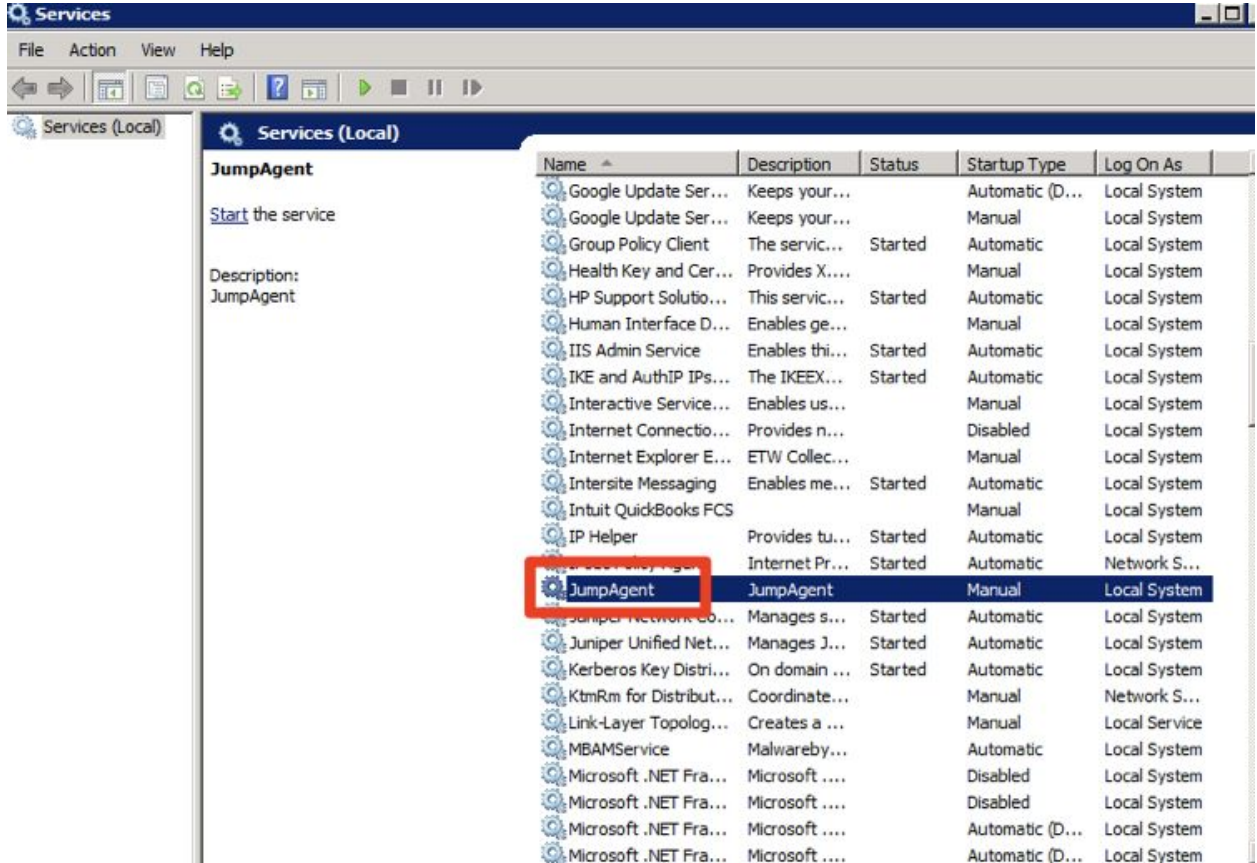
- EMR:** Contains a "Name:" dropdown menu and a "Version:" text input field. To the right is a logo with a stylized "H" and a green background.
- Local Windows User:** Contains a "Username:" text input field with a red hint "(domain\username)" and a "Password:" text input field.
- Database:** Contains a "Server IP:" text input field, a "Port:" text input field with the value "1433", a "DB Version:" dropdown menu, a "DB Name:" text input field, a checkbox for "Use Windows Authentication" with a red hint "(user credentials above)", a "SQL Username:" text input field, and a "SQL Password:" text input field. Below these fields is a "Test Connection" button.
- Local Settings:** Contains a "Secret Key:" text input field and a "Process Dir:" text input field with a search icon.

At the bottom of the window are two buttons: a green "Save" button and an orange "Exit" button.

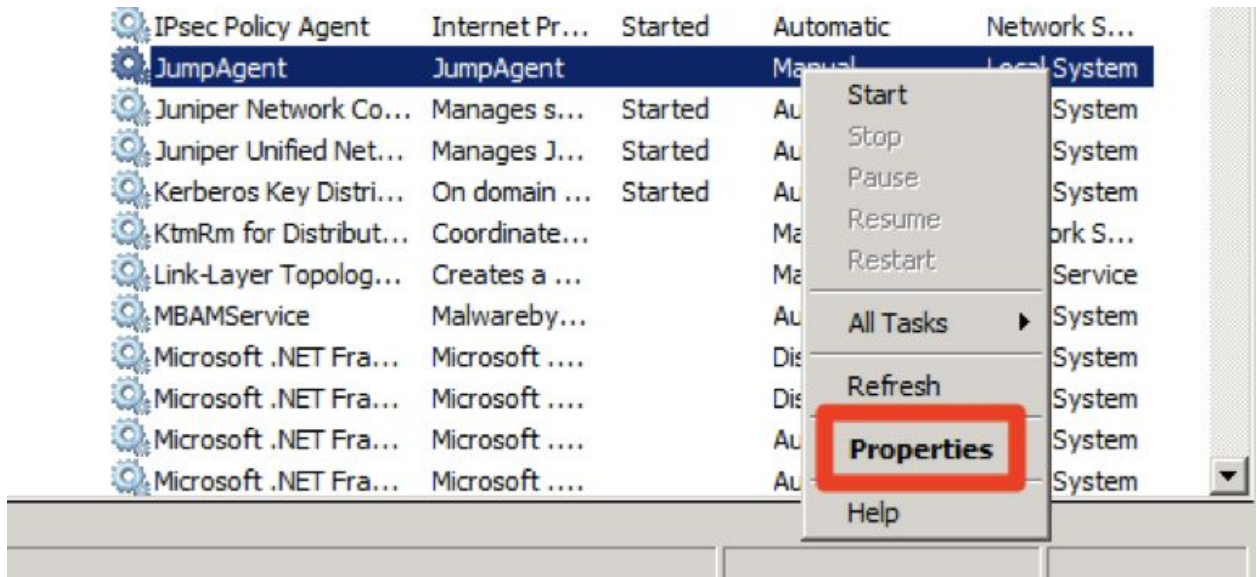
4. Once all the information is correct, click "Save."
5. Next, configure the Windows Service by clicking on "Start" then "Run" and enter "services.msc."

If this document has been download, please go to <https://support.healthjump.com/> for most up-to-date information.

6. In the Services application, identify and right click on the JumpAgent service.

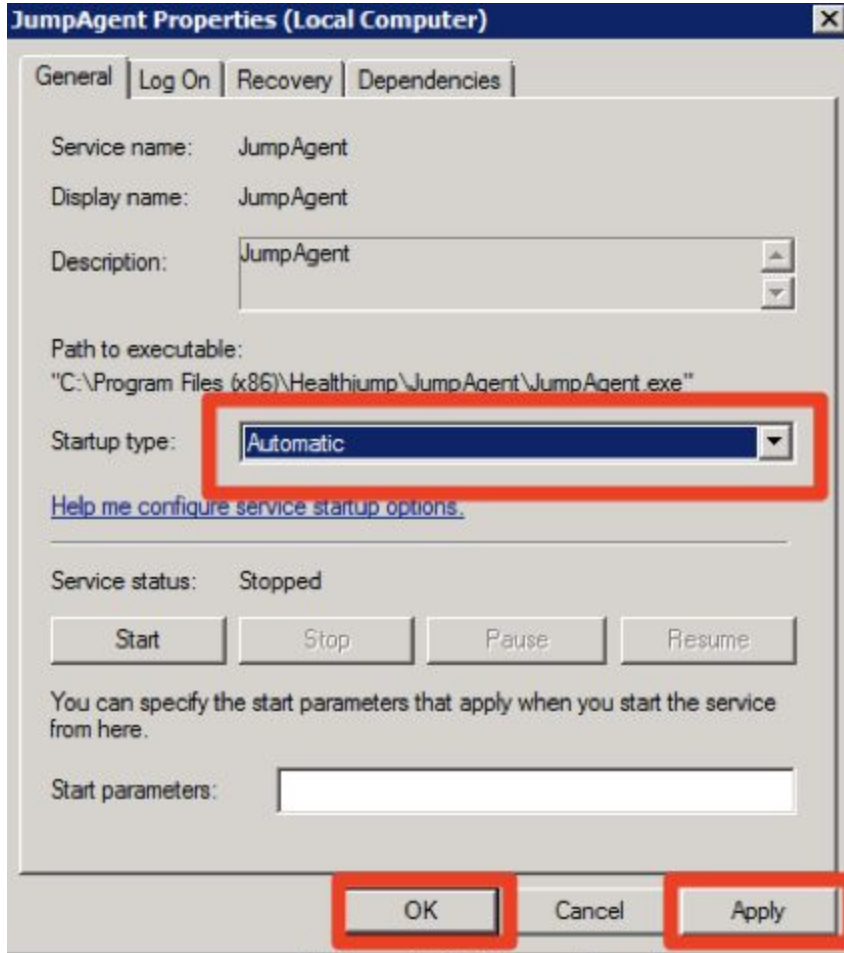


7. Select "Properties."

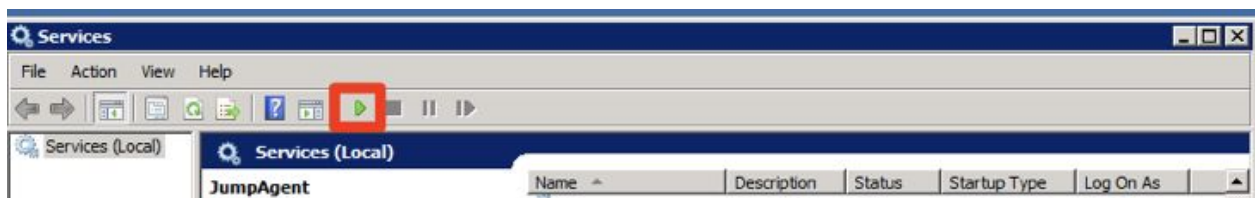


If this document has been download, please go to <https://support.healthjump.com/> for most up-to-date information.

8. Set the startup type to "Automatic," then select "Apply" and "Ok."



9. Finally click the green start arrow to start the service.



**Congratulations:** *You have successfully installed and configured JumpAgent!*

If this document has been download, please go to <https://support.healthjump.com/> for most up-to-date information.

